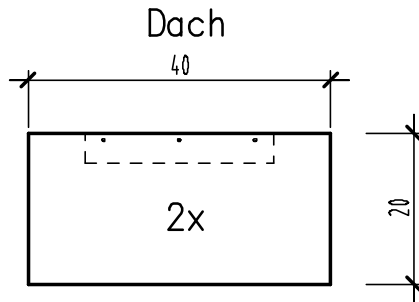
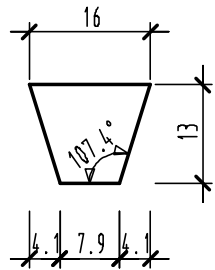


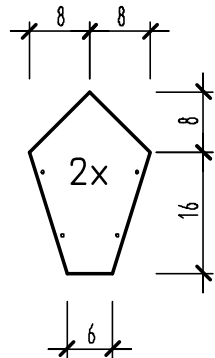
Bauteile Vogelhaus

M. 1:10

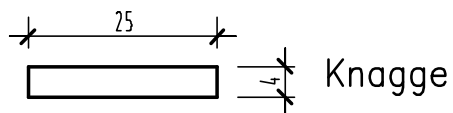
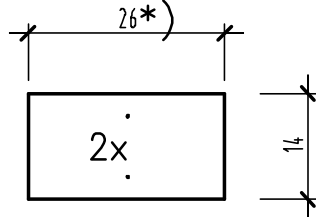
(optional)
Trennwand



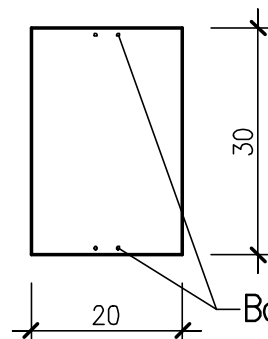
Seitenteile



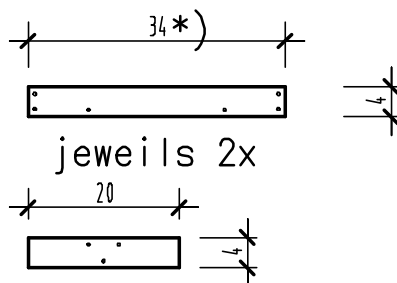
Seitenwände



Bodenplatte

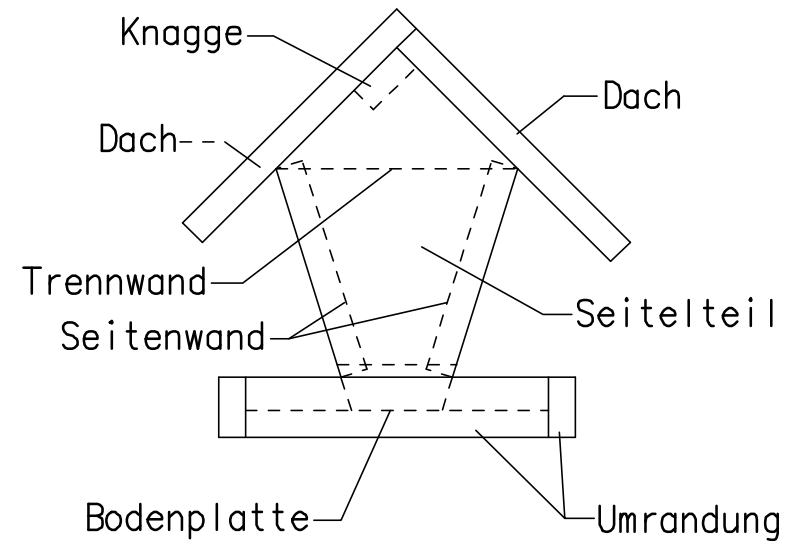


Umrandung Bodenplatte



*) Länge ggf. anpassen

Zusammenbau des Futterhaus



Material für das Vogelhaus:

Holz Brett z.B. 18x200x1600 mm (2x)

Dachlatte z.B. 20x40x1600 mm

Nägel o. Schrauben z.B. 4,0 x 35 & 4.0 x 40

Zierleisten (optional)

Dachpappe (optional)

Lasur für das Holz, ohne Schadstoffe (optional)

Seil zum Aufhängen am Baum (optional)

Weitere Infos und Bilder unter:

l i f e t i m e m a n . d e